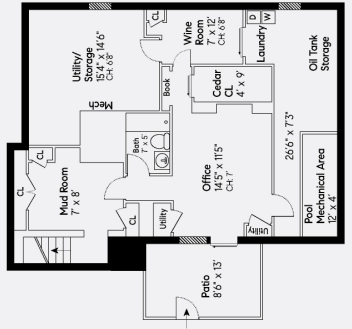
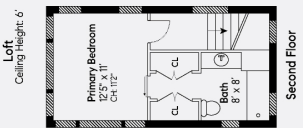
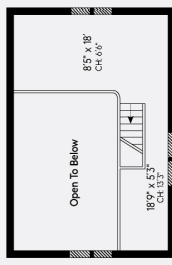
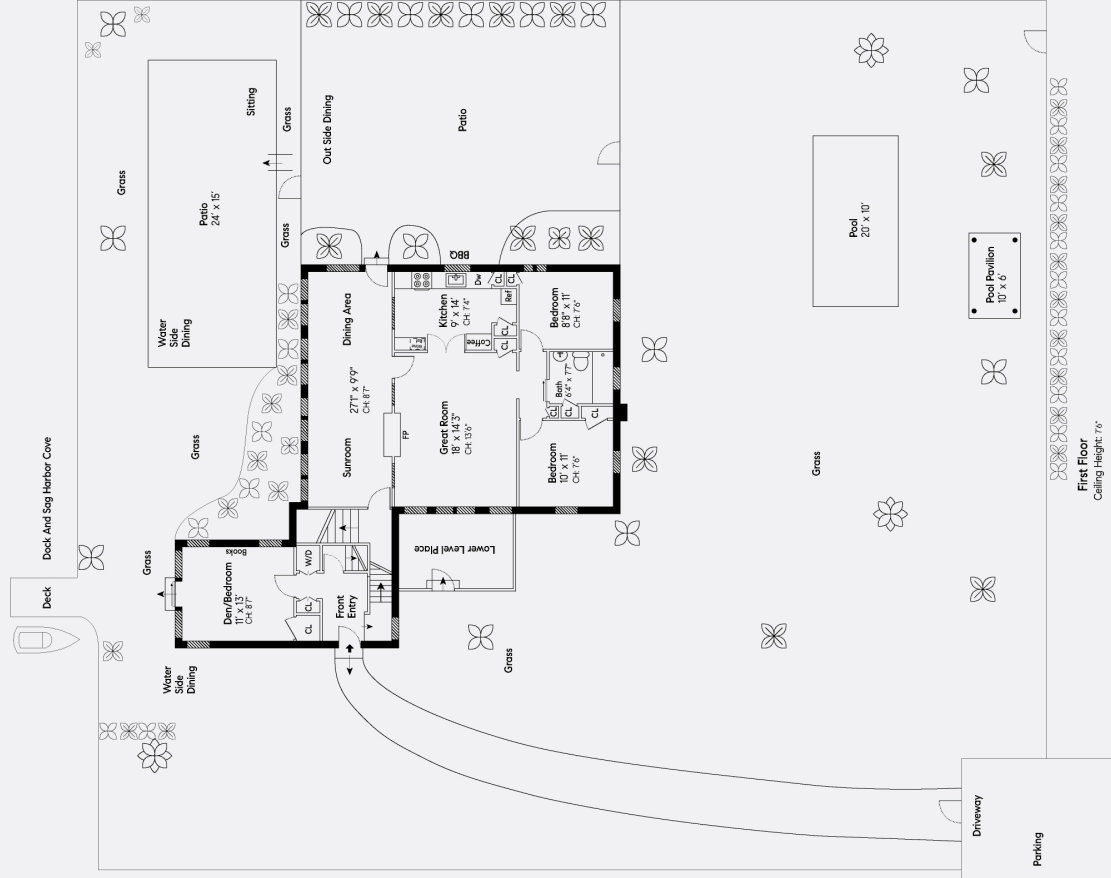


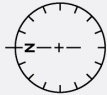
# COMPASS



## 10 Bluff Point Lane, Sag Harbor

4 Bed | 3 Bath | 1 Loft

First Floor Int: 1,359 sqft  
 First Floor Ext: 794 sqft  
 Second Floor: 312 sqft  
 Lower Level Int: 876 sqft  
 Lower Level Ext: 111 sqft  
 Loft: 253 sqft  
 Pool: 200 sqft  
 Total Int: 2,800 sqft  
 Total Ext: 1,105 sqft  
 Total: 3,905 sqft



- Window
- Door
- Thick Wall

First Floor  
Ceiling Height: 7'0"

Lower Level  
Ceiling Height: 7'

Compass is a licensed real estate broker and abides by Equal Housing Opportunity laws. All material presented herein is intended for informational purposes only. Information is compiled from sources deemed reliable but is subject to errors, omissions, changes in price, condition, sale or withdraw without notice. No statement is made as to accuracy of any description. All measurements and square footages are approximate. Exact dimensions can be obtained by retaining the services of an architect or engineer. This is not intended to solicit property already listed.